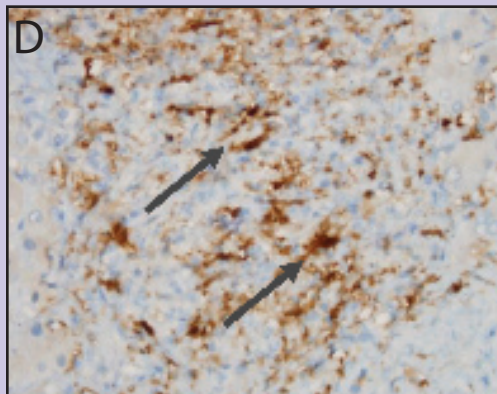
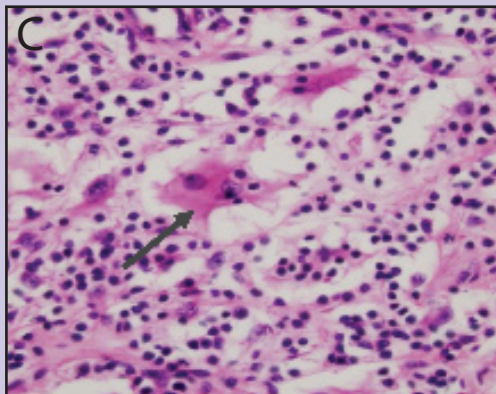
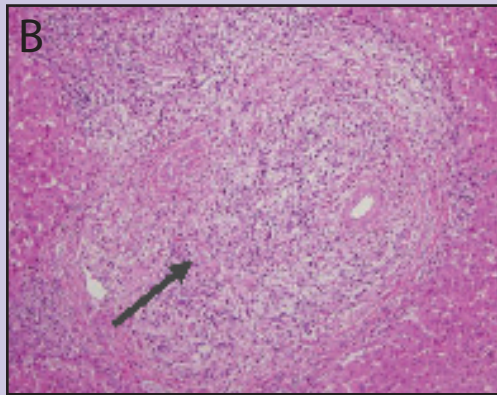
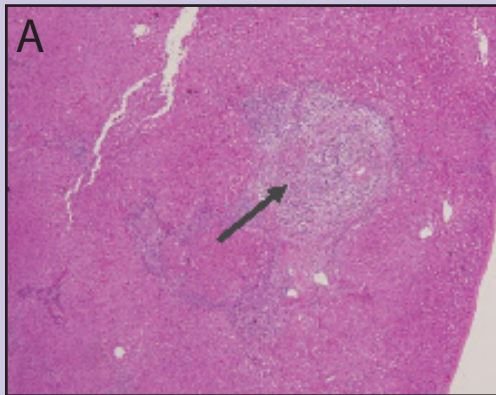
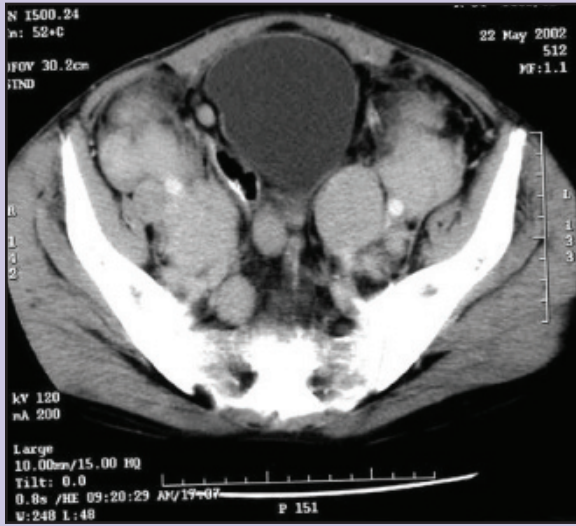


**Figure 55-1.** CT scan of pelvis that demonstrates diffuse lymphadenopathy.



**Figure 55-2.** (A) Low-power magnification (x16, original magnification) of liver biopsy showing a nodular infiltrate in the portal tracts. (B) Higher power (x100) of liver biopsy showing the infiltrate is rich in histiocytes. (C) Liver biopsy where avid phagocytosis of lymphocytes is found (x160). (D) An immunostain for S-100 was positive, as is typical of Rosai-Dorfman disease (x100).